

Nor Review Software



Nor-1026 Display, Reporting and Post Processing Software

Noise Pollution User Guide

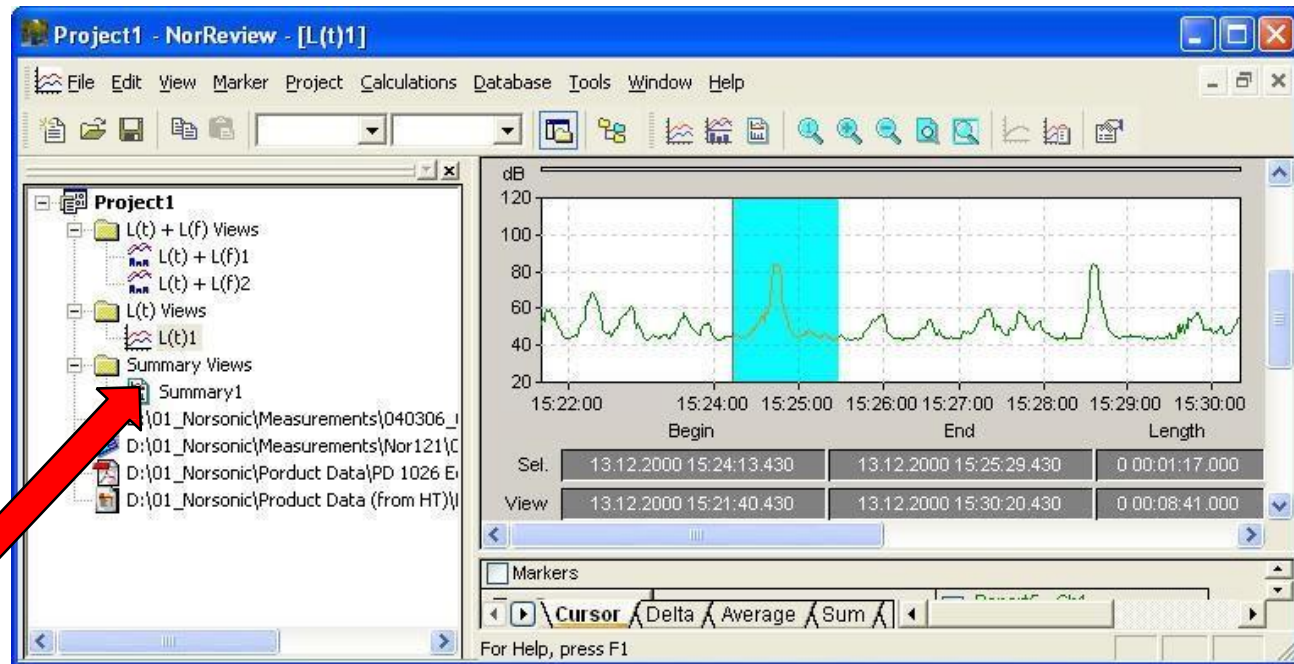


CAMPBELL ASSOCIATES
SOUND & VIBRATION SOLUTIONS

Ni Norsonic

Project administration

The *Workspace* window is the project administration window



The *Project Tree* is based on minimum one measurement file, but may additionally hold other kind of files such as Word/Excel documents, zip-files, photo-images, pdf-files, etc.



Setting-up Your Screen

The screenshot shows the software interface with a right-click context menu open over a graph. The menu items are:

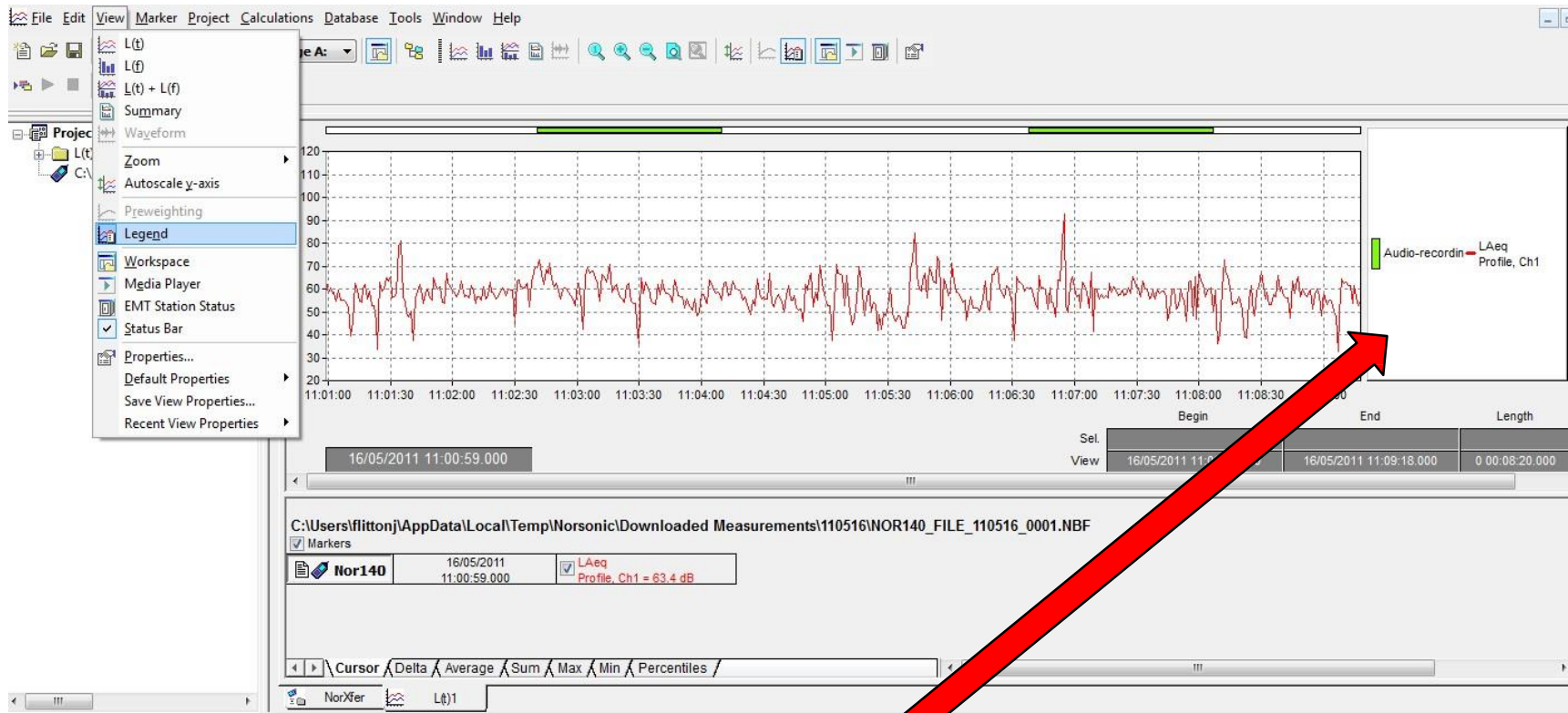
- Workspace
- Marker Management
- Marker Bar
- Media Player
- EMT Station Status
- Standard
- File
- Edit
- View
- Marker
- Project
- Calculations
- Database
- Tools
- Window
- Help

The graph displays a red waveform with a y-axis ranging from 20 to 120 and an x-axis showing time from 11:01:00 to 11:07:00. A red arrow points from the text below to the 'View' and 'Marker' options in the menu.

Right-click on the top grey menu space and select 'View' and 'Marker' from the drop-down list to see the frequency displays and the audio play icon.



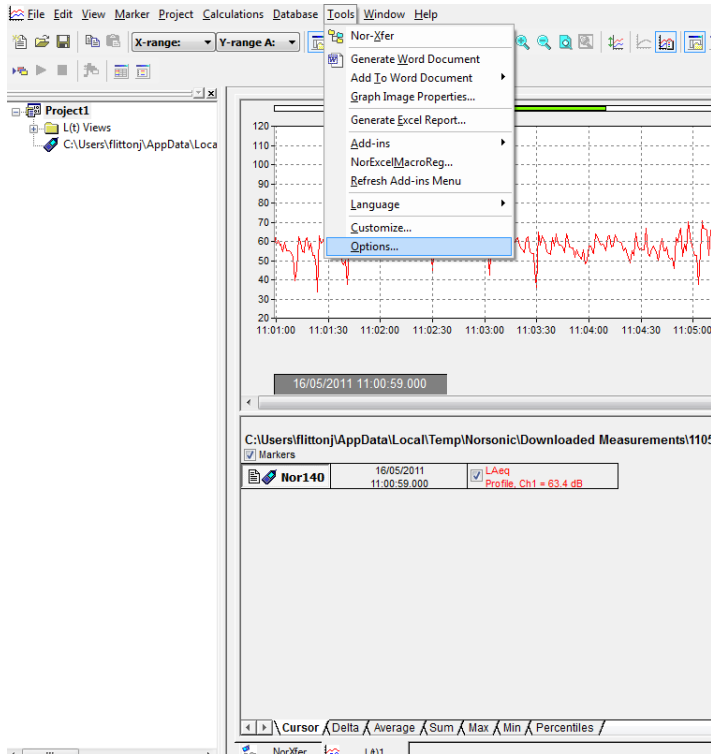
Setting-up Your Screen



Click on 'View' and select 'Legend' to see the key on the right-hand-side of the screen.

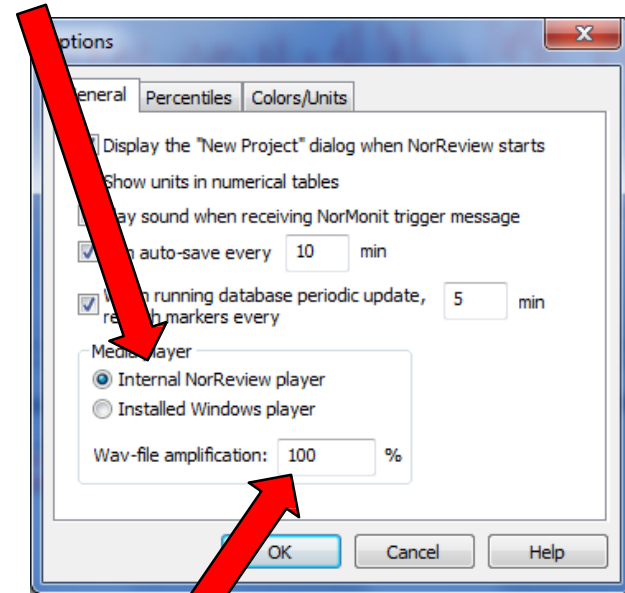


Setting-up Your Screen



Select 'Tools' and 'Options' to set the audio output and to add percentiles

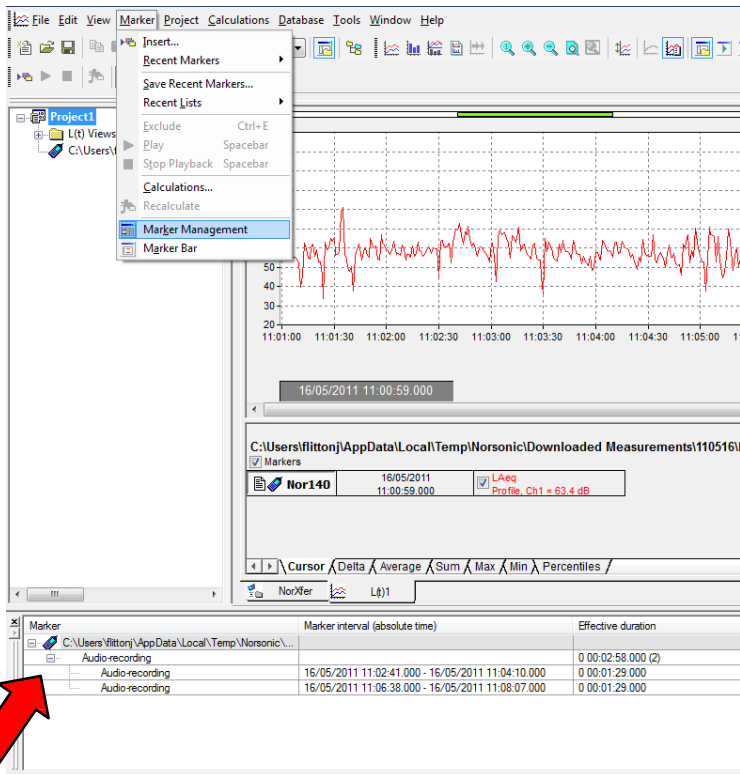
Select 'Internal NorReview Player to play Audio and have cursor moving at the same time.



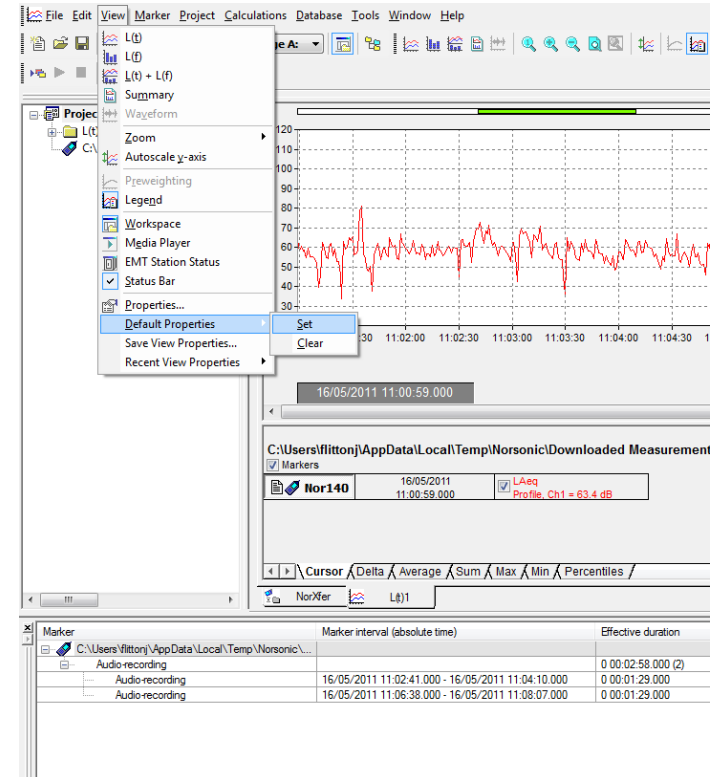
The volume can be amplified up to 500% to boost the audio output when listening to recordings.



Setting-up Your Screen



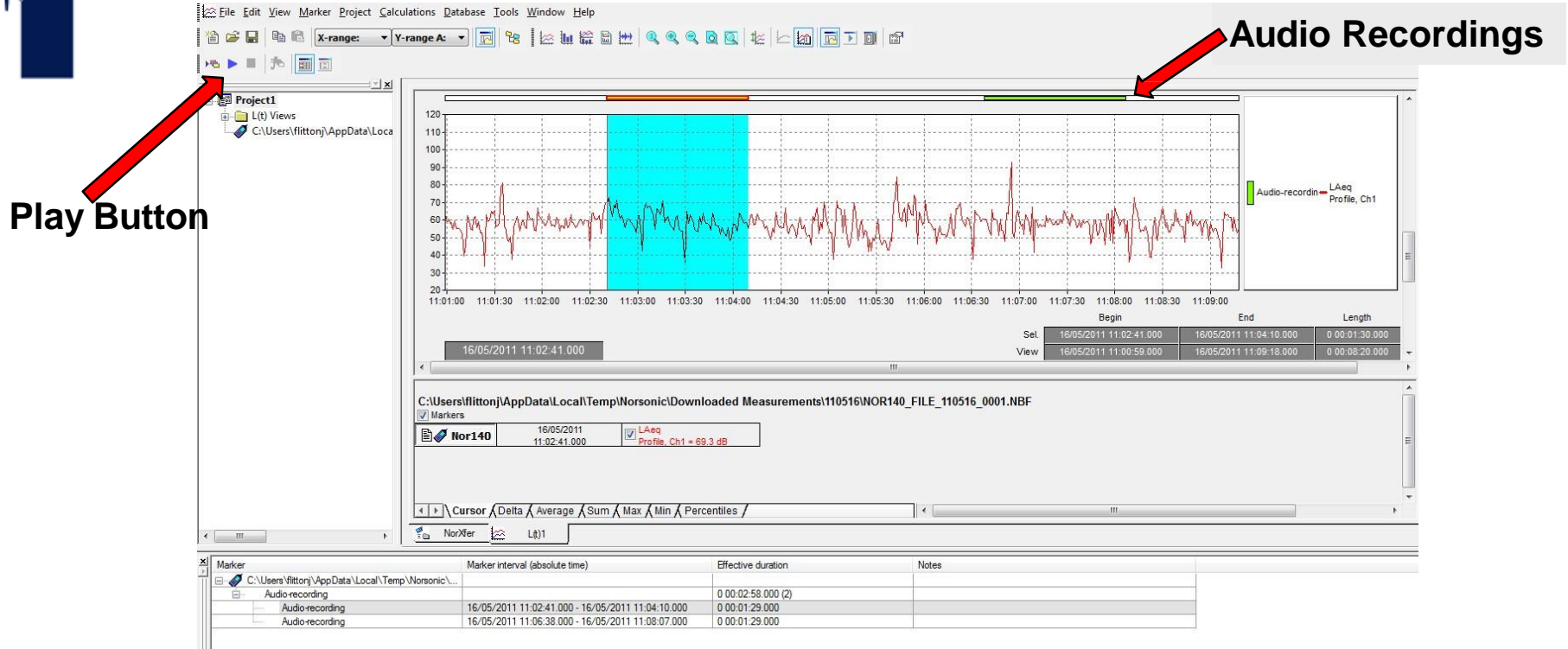
Select 'Marker' and 'Marker Management' to display audio logs to tie into diary sheets from the complainant.



Finally select 'View' – 'Default Properties' and 'set' to save the settings ready for next time.



Playing Audio Recordings



The green bars at the top of the measurement are your audio recordings. To listen to them simply click on the bar and then click the blue play icon. The spacebar also works as play/stop. If you wish to start the playback at another point you can click anywhere inside the blue shaded area and then click the play button to play from this point.



Playing Audio Recordings

- Marker Management – *View Marker Management*

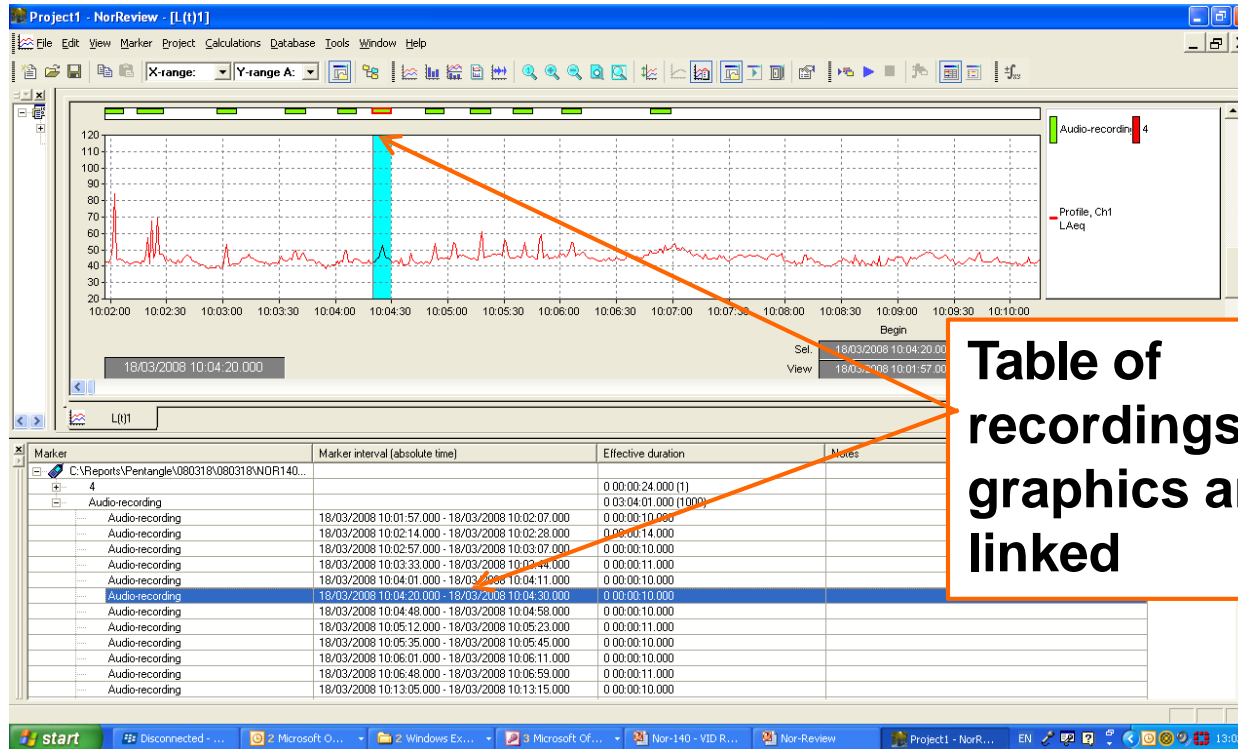
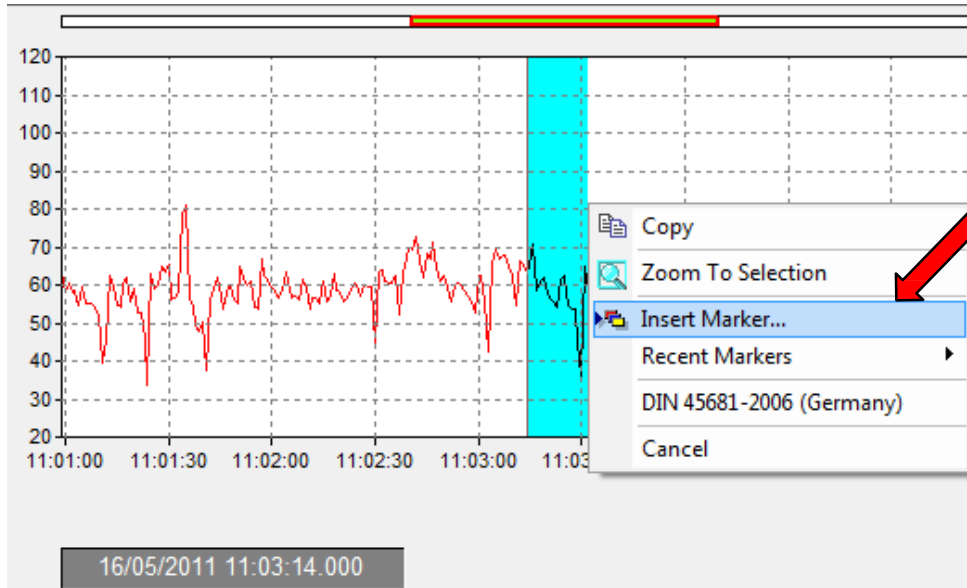


Table of recordings and graphics are linked



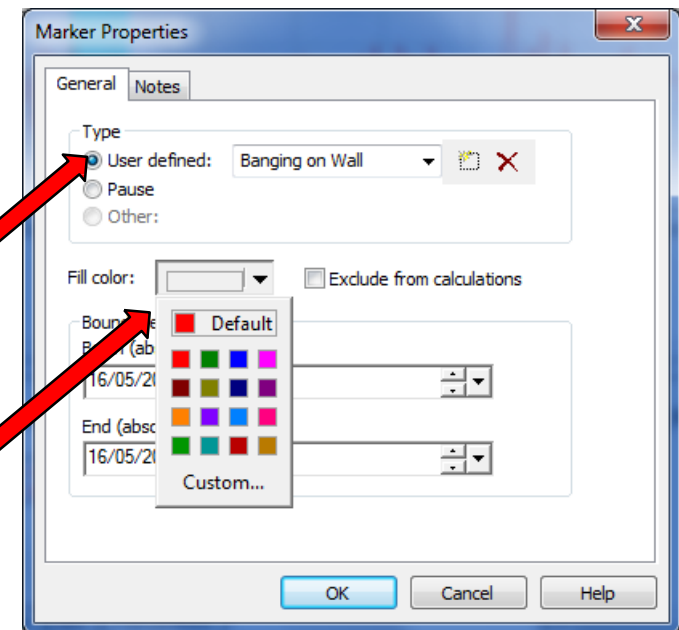
Inserting Markers



Left-click and drag to highlight an area. Click on 'Insert Marker' for a new marker or select 'Recent Marker' to re-use an existing marker.

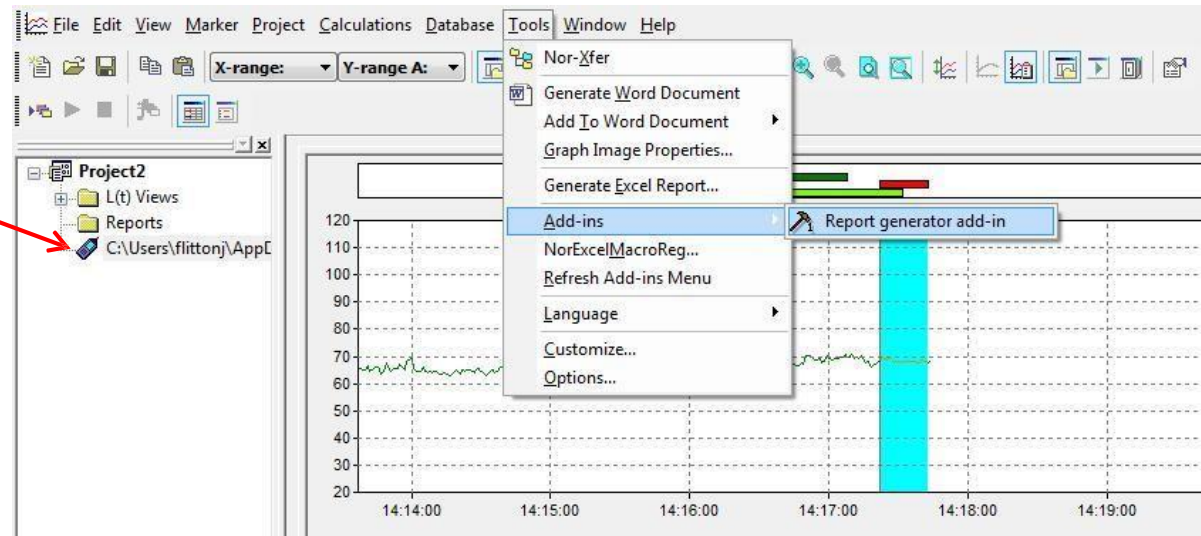
Type the nuisance into the 'User Defined' box and click the dotted Square to save it (so it appears in Recent markers).

Use the 'Fill Colour' box to select the colour of the marker.



Report Generator

- Click on the measurement file
- Select Tools - Add-ins – Report generator add-in



Report Generator

NorReport C:\Users\flittonj\AppData\Local\Temp\Norsonic\Downloaded Measureme...

Customer Laboratory Description Measurement property Info

Customer

Word template: C:\Program Files\Norsonic\NorReview\norso\Template2.doc

Name:

Address: Example Company, Inc.
High Street 321
Smalltown
Tel:9876 1234

Project description: NorReport demonstration project

Order Nr.: 123

Customer Nr.: 123456abc

Evaluation date: 03/11/2010

Open... Save As...

OK Cancel Apply

Use the tabs along the top of the box to enter the desired information into the relevant field. The customer tab should have the name, address and project description (i.e. Barking dog case etc).

The word template button allows you to call in you own edited template that includes your company logo and normal procedure for installing the equipment. To edit this file, or to add new templates, the folder is in C:/Program Files – Norsonic – NorReview – Templates by default.

